

**Mounts**

**WI-ACC-24GHZ-4610DB-ANG-BRKT**



**Description**  
Stainless steel "L" bracket mount for wall or pipe mount. For mounting omnidirectional antenna to 2" maximum diameter mast.

**Ordering Data**  
**Type** WI-ACC-24GHZ-4610DB-ANG-BRKT **Part No.** 6720005209

**WI-ACC-24GHZ-4610DB-STR-BRKT**



**Description**  
Aluminum MFB mount bracket. For mounting 1-1/4" diameter antenna to 2-1/2" maximum diameter mast.

**Ordering Data**  
**Type** WI-ACC-24GHZ-4610DB-STR-BRKT **Part No.** 6720005210

**WI-ACC-24GHZ-12DB-STR-BRKT**



**Description**  
Heavy duty MFB mount bracket

**Ordering Data**  
**Type** WI-ACC-24GHZ-12DB-STR-BRKT **Part No.** 6720005211

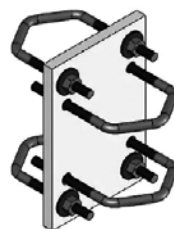
**WI-ACC-MAGBASE 12 RG58 SMA MALE**



**Description**  
Low frequency magnetic mount (for antennas operating 800-3000 MHz)

**Ordering Data**  
**Type** WI-ACC-MAGBASE 12 RG58 SMA MALE **Part No.** 6720005263

**WI-ACC-900MHZ-OMNI-STR-BRKT**



**Description**  
Light duty parallel or perpendicular pipe to pipe clamp, fits 1.5 - 2.4" to 1.5 - 2.4 " OD pipe

**Ordering Data**  
**Type** WI-ACC-900MHZ-OMNI-STR-BRKT **Part No.** 6720005268

**WI-ACC-900MHZ-YAGI-STR-BRKT**



**Description**  
Yagi clamp, fits mast OD of 0.5 - 0.84". Mounts to legs, towers, accessories with 1.25 - 2.4" OD

**Ordering Data**  
**Type** WI-ACC-900MHZ-YAGI-STR-BRKT **Part No.** 6720005266

**WI-ACC-900MHZ-14YAGI-STR-BRKT**



**Description**  
Yagi clamp, fits mast OD of 0.75 - 1". Mounts to legs, towers, accessories with 1.25 - 2.4" OD

**Ordering Data**  
**Type** WI-ACC-900MHZ-14YAGI-STR-BRKT **Part No.** 6720005267

**WI-ACC-900MHZ-035OMNI-STR-BRKT**



**Description**  
Aluminum MFB mount bracket. For mounting 1-5/16" diameter antenna to 2-1/2" maximum diameter mast.

**Ordering Data**  
**Type** WI-ACC-900MHZ-035OMNI-STR-BRKT **Part No.** 6720005271

**WI-ACC-900MHZ-70MNI-STR-BRKT**



**Description**  
Heavy duty fiberglass base station mount. For mounting an antenna with 2-1/2" maximum diameter onto 2-1/2" maximum diameter mast.

**Ordering Data**  
**Type** WI-ACC-900MHZ-70MNI-STR-BRKT **Part No.** 6720005272

## Accessories

## Hardware

### Surge Suppressor

**WI-ACC-125-1000MHZ  
SURGE NF-NF**



**WI-ACC-2-6GHZ SURGE  
NF-NF**



**WI-DIV-CCMA  
SMA M – SMA F**



#### Technical Data

Connector	N female to N female
Frequency Range	125 - 1000 MHz
VSWR	<1.1 over frequency range
Insertion Loss	<0.1 dB over frequency range
Turn-on	600fb Vdc +/- 20%

Connector	N female to N female
Frequency Range	2.0 - 6.0 GHz
VSWR	1.3: 1
Insertion Loss	0.1 dB

Connector	SMA Male to SMA Female
Frequency Range	<1200 MHz
Insertion Loss	<0.2dB over range

#### Ordering Data

Type	Part No.
WI-ACC-125-1000MHZ SURGE NF-NF	<b>6720005261</b>

Type	Part No.
WI-ACC-2-6GHZ SURGE NF-NF	<b>6720005262</b>

Type	Part No.
WI-DIV-CCMA	<b>6720005111</b>

### Antenna Coupler

**WI-ACC-BULK-C1D1  
SMA M - SMA M**



**WI-ACC-BULK-C1D1  
SMA M - NM**



#### Technical Data

Maximum Fault Voltage	250 VDC, 250 VAC 50-60 Hz
Maximum Antenna Power Output	2 watts or 33 dB
Maximum Capacitance	5.64 nF
Frequency Range	260 to 2483 MHz
Impedance	50 Ohms
Approximate Signal Attenuation (1):	
@ 425 MHz	0.6 dB
@ 915 MHz	2.2 dB
@ 2.4 GHz	2.6 dB
Approximate Weight	0.5 lb (0.23 kg)
Housing Material	300 Series Stainless Steel
Ambient Temperature Range	-40°/+85° C

Maximum Fault Voltage	250 VDC, 250 VAC 50-60 Hz
Maximum Antenna Power Output	2 watts or 33 dB
Maximum Capacitance	5.64 nF
Frequency Range	260 to 2483 MHz
Impedance	50 Ohms
Approximate Signal Attenuation (1):	
@ 425 MHz	3.2 dB
@ 915 MHz	2.4 dB
@ 2.4 GHz	4.1 dB
Approximate Weight	0.5 lb (0.23 kg)
Housing Material	300 Series Stainless Steel
Ambient Temperature Range	-40°/+85° C

#### Approvals

Class 1 Div 1, group A, B, C, D

Class 1 Div 1, group A, B, C, D

#### Ordering Data

Type	Part No.
WI-ACC-BULK-C1D1 SMA M - SMA M	<b>6720005298</b>

Type	Part No.
WI-ACC-BULK-C1D1 SMA M - NM	<b>6720005299</b>

## Adapters

## Accessories

### Adapters

WI-ACC-ADAPT SMA M - SMA M



<b>Description</b>	Adapter	
<b>Connector</b>	SMA male to SMA male	
<b>Ordering Data</b>	<b>Type</b>	<b>Part No.</b>
	WI-ACC-ADAPT SMA M - SMA M	6720005290

WI-ACC-ADAPT SMA F - SMA F



<b>Description</b>	Adapter	
<b>Connector</b>	SMA female to SMA female	
<b>Ordering Data</b>	<b>Type</b>	<b>Part No.</b>
	WI-ACC-ADAPT SMA F - SMA F	6720005291

WI-ACC-ADAPT NM - NM



<b>Description</b>	Barrel Adapter	
<b>Connector</b>	N male to N male	
<b>Ordering Data</b>	<b>Type</b>	<b>Part No.</b>
	WI-ACC-ADAPT NM - NM	6720005292

WI-ACC-ADAPT NF - NF



<b>Description</b>	Barrel Adapter	
<b>Connector</b>	N female to N female	
<b>Ordering Data</b>	<b>Type</b>	<b>Part No.</b>
	WI-ACC-ADAPT NF - NF	6720005293

WI-ACC-ADAPT SMA F - NM



<b>Description</b>	Adapter	
<b>Connector</b>	SMA female to N female	
<b>Ordering Data</b>	<b>Type</b>	<b>Part No.</b>
	WI-ACC-ADAPT SMA F - NM	6720005294

WI-ACC-ADAPT SMA M - NF



<b>Description</b>	Adapter	
<b>Connector</b>	SMA male to N female	
<b>Ordering Data</b>	<b>Type</b>	<b>Part No.</b>
	WI-ACC-ADAPT SMA M - NF	6720005295

WI-ACC-BULK SMA F - SMA F



<b>Description</b>	Bulkhead Adapter	
<b>Connector</b>	SMA female to SMA female with D-flat	
<b>Ordering Data</b>	<b>Type</b>	<b>Part No.</b>
	WI-ACC-BULK SMA F - SMA F	6720005296

WI-ACC-ADAPT SMA F - SMA M ANGL



<b>Description</b>	Right Angle Adapter	
<b>Connector</b>	SMA male to SMA female	
<b>Ordering Data</b>	<b>Type</b>	<b>Part No.</b>
	WI-ACC-ADAPT SMA F - SMA M ANGL	6720005297