

# OMNIMATE<sup>®</sup> Power Terminal LUF and LUFS 15.00

## Fast and Reliable Connection of Power Electronic Devices

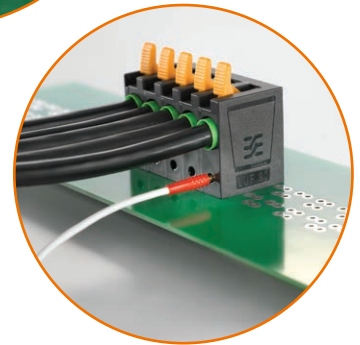
### Two Handling Options

Both terminal designs feature Weidmüller's PUSH IN connection system for wiring of solid or ferruled wires from 18 AWG to 4 AWG with optional tool free actuating lever (LUFS) or screwdriver push-button actuated clamp (LUF).



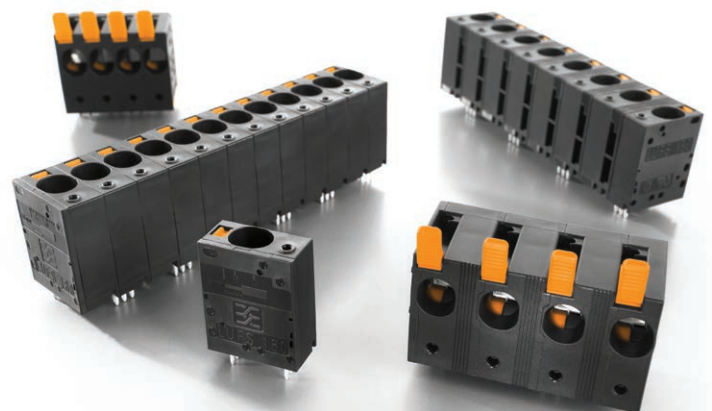
### High System Integrity

From easily accessible diagnostic testing points to wire connection with low force to the circuit board, the LUF and LUFS terminals ensure the integrity of the PCB board and the electrical connection.



### Suitable for High Power Applications

LUF and LUFS 15.00 are UL/CSA rated for up to 66A and 600V according to UL 1059. Specific ratings apply for the commercial, general industrial and industrial device groups. Higher voltages up to 1000V are approved for terminal blocks used with equipment of limited rating.



### Reliability by Design

The contact system closes automatically after being opened, ensuring that the wire is always safely connected.



Let's connect.

[www.weidmuller.com](http://www.weidmuller.com)

**Weidmüller** 

# Applications

For high power device applications where reliable components with increased safety features for high voltage are required, such as drive controllers, radio base stations and photovoltaic inverters.

Connection of  
**1** - Power Supply and  
**2** - Motor Connections



**Drive Controllers**

Connection of  
**1** - Power Supply and  
**2** - Cross Connections





**Radio Base Stations**

Connection of  
**1** - DC Input and  
**2** - AC Output



**Photovoltaic Inverters**

## Featured Product Types

Variant - Image	Push In Actuation	Wire Gauge	Poles	Pins per Pole	Pitch mm/in	Pin Length mm/in	Orientation		
							90° Part No.	180° Part No.	
<b>LUF</b>									
	Lever	20...4 AWG	2	4	15/.5906	5/.1969	<b>2491800000</b>	<b>N/A</b>	
	Lever	20...4 AWG	3	4	15/.5906	5/.1969	<b>2491900000</b>	<b>N/A</b>	
	Lever	20...4 AWG	4	4	15/.5906	5/.1969	<b>2491910000</b>	<b>N/A</b>	
	Lever	20...4 AWG	5	4	15/.5906	5/.1969	<b>2491920000</b>	<b>N/A</b>	
	Lever	20...4 AWG	6	4	15/.5906	5/.1969	<b>2491930000</b>	<b>N/A</b>	
	Lever	20...4 AWG	7	4	15/.5906	5/.1969	<b>2491940000</b>	<b>N/A</b>	
	Lever	20...4 AWG	8	4	15/.5906	5/.1969	<b>2491950000</b>	<b>N/A</b>	
	Lever	20...4 AWG	2	2	15/.5906	5/.1969	<b>2492000000</b>	<b>N/A</b>	
	Lever	20...4 AWG	3	2	15/.5906	5/.1969	<b>2492010000</b>	<b>N/A</b>	
	Lever	20...4 AWG	4	2	15/.5906	5/.1969	<b>2492020000</b>	<b>N/A</b>	
	Lever	20...4 AWG	5	2	15/.5906	5/.1969	<b>2492030000</b>	<b>N/A</b>	
	Lever	20...4 AWG	6	2	15/.5906	5/.1969	<b>2492040000</b>	<b>N/A</b>	
	Lever	20...4 AWG	7	2	15/.5906	5/.1969	<b>2492050000</b>	<b>N/A</b>	
	Lever	20...4 AWG	8	2	15/.5906	5/.1969	<b>2492060000</b>	<b>N/A</b>	
<b>LUFS</b>									
	Push Button	18...4 AWG	2	3	15/.5906	5/.1969	<b>2499440000</b>	<b>2491820000</b>	
	Push Button	18...4 AWG	3	3	15/.5906	5/.1969	<b>2500570000</b>	<b>2492220000</b>	
	Push Button	18...4 AWG	4	3	15/.5906	5/.1969	<b>2500580000</b>	<b>2492230000</b>	
	Push Button	18...4 AWG	5	3	15/.5906	5/.1969	<b>2500590000</b>	<b>2492240000</b>	
	Push Button	18...4 AWG	6	3	15/.5906	5/.1969	<b>2500660000</b>	<b>2492250000</b>	
	Push Button	18...4 AWG	7	3	15/.5906	5/.1969	<b>2500600000</b>	<b>2492260000</b>	
	Push Button	18...4 AWG	8	3	15/.5906	5/.1969	<b>2500610000</b>	<b>2492270000</b>	
	90° Orientation - UL/CSA: 66A/1000V 180° Orientation - UL/CSA: 57A/1000V								

## Information

Information is available for download on the web at [www.weidmuller.com](http://www.weidmuller.com).

Ref. No.	Description
LIT1802	PCB Terminals and PCB Connectors Product Line Card

### Weidmuller, Canada

10 Spy Court  
 Markham, Ontario L3R 5H6  
 Telephone: (800) 268-4080  
 Facsimile: (905) 475-2798  
 Email: [info1@weidmuller.ca](mailto:info1@weidmuller.ca)  
 Website: [www.weidmuller.ca](http://www.weidmuller.ca)

### Weidmuller, Mexico

Bldv. Hermanos Serdán 698,  
 Col. San Rafael Oriente  
 Puebla, Puebla, Mexico  
 C.P. 72029  
 Telephone: 01 222 2686267  
 Facsimile: 01 222 2686219  
 Email: [clientes@weidmuller.com.mx](mailto:clientes@weidmuller.com.mx)  
 Website: [www.weidmuller.com.mx](http://www.weidmuller.com.mx)

### Weidmuller, United States

821 Southlake Blvd.  
 Richmond, Virginia 23236  
 Telephone: (800) 849-9343  
 Facsimile: (804) 379-2593  
 Email: [info@weidmuller.com](mailto:info@weidmuller.com)  
 Website: [www.weidmuller.com](http://www.weidmuller.com)